



Fire Department Report

Report of Activities for

February 2025

Proudly Serving Since 1880

Department & Community Events

- This month crews continued training on surface ice rescue, ice diving, and airboat operations.



- Congrats to all the Olympians who played on February 22nd. Your heart and passion is inspirational!!

Thank you to the Special Olympics of Walworth County for the invitation.



- Thank you Mt Zion Christian Church for dropping off lunch on February 16th. It was a pleasant surprise in the middle of a busy day!

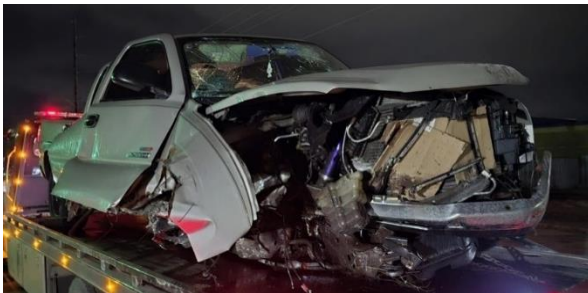


Notable Calls for Service- Lake Geneva

- In the afternoon of the 10th Med 281 responded to Badger High School for an injured wrestler. The patient was stabilized and transported to Children's Milwaukee for emergent orthopedic services.
Crew- FF/PM's Osnacz & Kubiak
- On the 18th, Med 281 responded to a person who fainted. Upon their arrival patient was awake and refusing services. During this period the patient experienced another loss of consciousness. Upon awakening the patient agreed to an assessment. The patient was discovered to be experiencing a cardiac emergency and was subsequently transport to St. Luke's Milwaukee for emergency cardiac surgery.
Crew- FF/PM's Kubiak & Straube and FF/AEMT Schiltz

Notable Calls for Service- Linn

- In the early morning hours of the 9th, the Linn and Lake Geneva stations responded to the report of a motor vehicle collision on South Lakeshore Dr. Upon arrival Engine 332 reported 1 vehicle into the bridge abutment and 2 injured persons. One patient was treated and released. The second was transported with minor. Response- Engine 331, Med 331 and Squad 281



Days with multiple calls for service (6 or more):

- 1st (7)	- 7th (6)	- 14th (9)	- 19th (7)	- 24th (6)
- 2nd (10)	- 8th (10)	- 15th (8)	- 20th (6)	- 27th (10)
- 3rd (7)	- 9th (8)	- 16th (6)	- 21st (10)	
- 4th (8)	- 11th (6)	- 17th (8)	- 22nd (7)	
- 6th (9)	- 12th (7)	- 18th (7)	- 23rd (10)	

Number of days with greater than 0.33 Unit Hours Utilization- 22 (78.6%)

Number of Simultaneous Calls per Month- 55 (28% of total call volume)

Number of simultaneous Incidents

2 Simultaneous Incidents- 45

3 Simultaneous Incidents- 6

4 Simultaneous Incidents- 3

5 Simultaneous Incidents- 1

Membership Committee Update

- Current number of applicants – 8
- 1st Interview – 4
- Assessments- 1
- 2nd Interview – 0
- Conditional Offer Pending Background and Medical – 3
- Need Orientation Date – 0
- Orientation Completed – 2
- Current Roster
 - Full Time (18)
 - Firefighter/EMT- 3
 - Firefighter/AEMT- 3
 - Firefighter/Paramedic- 10
 - Lieutenant- 1
 - Captain- 1
 - Paid-On-Call (21)
 - Firefighter- 2
 - Engineer- 3
 - EMT- 2
 - Paramedic- 1
 - Firefighter/Engineer- 3
 - Firefighter/EMT-
 - Firefighter/AEMT- 3
 - Firefighter/Paramedic- 1
 - Paid-On-Premise (6)
 - Firefighter/AEMT- 2
 - Firefighter/AEMT- 2
 - Firefighter/Paramedic- 6

By the Numbers

	2024 Total	Jan 1- Feb 29, 2024	Jan 1- Feb 28, 2025	February 2024	February 2025
General Alarms	686	118	92	52	53
Shift Alarms	1750	261	288	112	143
	2024 Total	Jan 1- Feb 29, 2024	Jan 1- Feb 28, 2025	February 2024	February 2025
<u>Calls For Service</u>					
ACCI – Accident- Personal Injury	76	10	9	6	7
ALMF – Fire Alarm	219	37	28	10	10
AMB – EMS	1663	248	285	110	148
BURN – Burning complaint	5	6	0	0	0
CITATION – Citation issuance	0	0	0	0	0
CO – Carbon Monoxide Detector	36	2	6	3	4
DIVE – Water/Dive Rescue	3	2	1	1	0
ERROR – Error	7	2	2	0	1
FIRE – Report of Fire	49	7	5	4	1
GAS – Gas Odor or Leak	34	3	4	2	2
GRASS – Grass/Brush Fire	5	0	1	0	1
HAZMAT- Hazmat Call	5	1	1	1	1
INT – ALS Intercept	19	3	1	1	0
INV – Fire Investigation	9	1	2	0	0
MABAS – Mabas Call	35	8	5	3	4
MAE – Mutual Aid EMS	124	25	14	8	6
MAF – Mutual Aid Fire	53	14	6	5	3
MAFE – Mutual Aid Fire & EMS	5	3	0	1	0
OTHER – Other	31	5	6	4	3
STAN – Standby	27	5	5	5	3
Tech – Technical Rescue Team	1	0	0	0	0
TEMS – Tactical EMS Request/Swat	8	0	1	0	1
TRAI – Training	0	0	0	0	0
<u>Total</u>	2414	380	382	164	196

Average Response Time Shift Call (time of call to scene, emergent responses within primary response area and excluding mutual aid & MABAS)	6 minutes 39 seconds				
Average Shift Call Turn Out Time (time of call to first unit enroute, emergent responses within primary response area and excluding mutual aid & MABAS)	1 minutes 5 seconds				
Average Response Time General Alarm (time of call to scene, emergent responses within primary response area and excluding mutual aid & MABAS)	6 minutes 35 seconds				
Average General Alarm Turn Out Time (time of call to first unit enroute, emergent responses within primary response area and excluding mutual aid & MABAS)	1 minute 40 seconds				
Fire Prevention Bureau					
	2024 Total	Jan 1- Feb 29, 2024	Jan 1- Feb 28, 2025	February 2024	February 2025
Inspections	1857	105	149	37	131
Active Developments/Plan Review					
Fire Alarm					
Geneva Towers Geneva Meadows 1351 Elkhorn Rd					
Sprinkler					
Symphony Bay Clubhouse Crist Theater Geneva Towers Plas-Tech Engineering 901 Maxwell St 1351 Elkhorn Rd Bergeson Boats					
Hood					

Parting Shot



More than 2,000 eye injuries occur on the job site every day and about one in 10 of them require missed work days to recover. Of the total amount of work-related eye injuries, 10 to 20 percent will cause temporary or permanent vision loss in the affected employees.

And, while many people think that eye injuries primarily occur in manufacturing, construction or trade jobs, nearly 40 percent of work-related eye injuries occur in offices, healthcare facilities, laboratories and similar environments.

Flying objects, tools, particles, chemicals and harmful radiation, are the causes of most eye injuries. And in many cases, implementing safe work practices and utilizing appropriate personal protective equipment could prevent them entirely.

March is Workplace Eye Safety Awareness Month and that is why we are taking this opportunity to remind you of a few tips to help protect your eyes while on the job.

- Always wear the appropriate safety eyewear for your job site or role, even if you are just passing through a hazardous area.
- If working in an area with particles or dust, be sure to wear safety glasses with side shields to protect against flying objects.
- When working with chemicals, always wear safety goggles or face shields to protect against splashing.
- When working around hazardous radiation like welding, lasers or fiber optics, be sure to use special-purpose safety goggles and helmets designed specifically for the task.